

# 173960 Connector

## DESCRIPTION

Connector, P/N 173960, is a high temperature 427°C (800°F), two terminal connector which will accommodate No. 18 or No. 20 gage two conductor shielded cable. The connector is designed to mate with all CEC vibration transducers having 3/8 x 32 NEF two-pin receptacle: except the Type 4-118 series.

## INSTALLATION

To install a cable to the connector, proceed as follows:

- 1) Prepare cable leads as shown in Figure 2.
- 2) Insert cable through clamp nut (1, Fig 1) and cable clamp (2).
- 3) Install cable leads in socket contacts (3) and crimp the socket contacts to the cable leads using a crimp tool P/N 616935.
- 4) Insert socket contacts into connector insulator (5) and place two insulator halves (4) over socket contacts.

**CAUTION: Do not force connector insulator into shell assembly. The connector insulator must be positioned so that the key on the shell assembly fits into the keyway on the connector insulator.**

- 5) Insert connector insulator, socket contacts and insulator halves into the shell assembly.
- 6) Place the cable clamp inside clamp nut and screw the shell assembly into the clamp nut.
- 7) Using 0.025 inch diameter safety wire, wire the clamp nut securely to the shell assembly as shown in Figure 1.

## REPAIR PARTS

Replacement parts for the connector can be ordered from Aero Support Ltd.

Item No.	Part No.	Qty	Description
1	364761	1	Clamp Nut
2	173967	1	Cable Clamp
3	173963	2	Socket Contact
4	173962	2	Insulator Half
5	173965	1	Insulator
6	173964	1	Shell Assembly

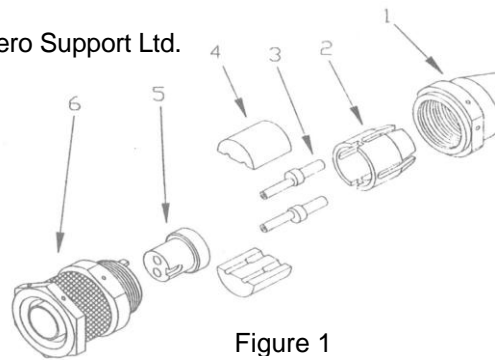


Figure 1

NOTE: Cable assemblies with connector 173960 installed may also be purchased, contact sales for information on the type of cable assemblies which are available. It is recommended that Connector and Cable Assembly P/N 82406 be used with Type 4-118 Transducers for greater connection reliability.

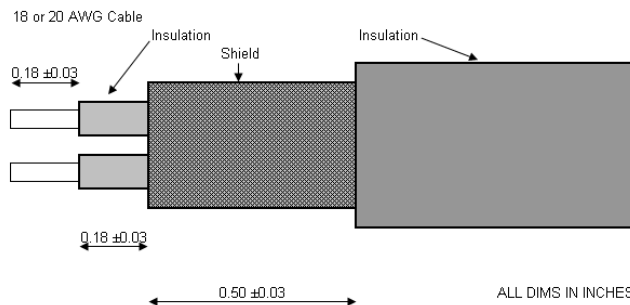


Figure 2

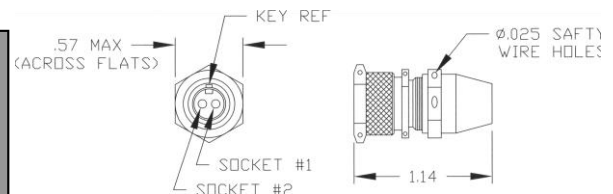


Figure 3